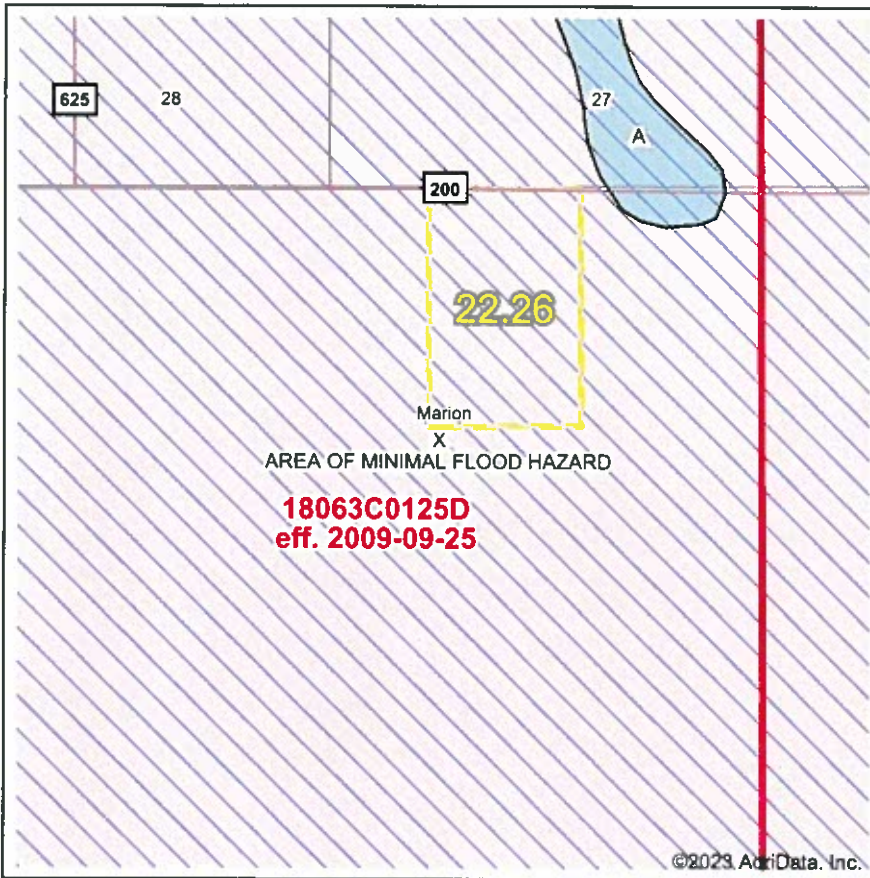


FEMA Report



Map Center: 39° 47' 12.24, -86° 37' 51.12
 State: IN Acres: 22.26
 County: Hendricks Date: 5/5/2023
 Location: 34-16N-2W
 Township: Marion

Maps Provided By:

 CUSTOMIZED ONLINE MAPPING
 © AgriData, Inc. 2023 www.AgriDataInc.com



Name	Number	County	NFIP Participation	Acres	Percent
Hendricks County	180415	Hendricks	Regular	22.26	100%
Total				22.26	100%
Map Change	Date	Case No.	Acres	Percent	
No			0	0%	
Zone	SubType	Description	Acres	Percent	
X	AREA OF MINIMAL FLOOD HAZARD	Outside 500-year Floodplain	22.26	100%	
Total			22.26	100%	
Panel	Effective Date	Acres	Percent		
18063C0125D	9/25/2009	22.26	100%		
Total		22.26	100%		

Flood related information provided by FEMA

Topography Contours



©2023 AgriData, Inc.

Source: USGS 10 meter dem
 Interval(ft): 2.0
 Min: 887.9
 Max: 912.0
 Range: 24.1
 Average: 905.3
 Standard Deviation: 6.2 ft



5/5/2023

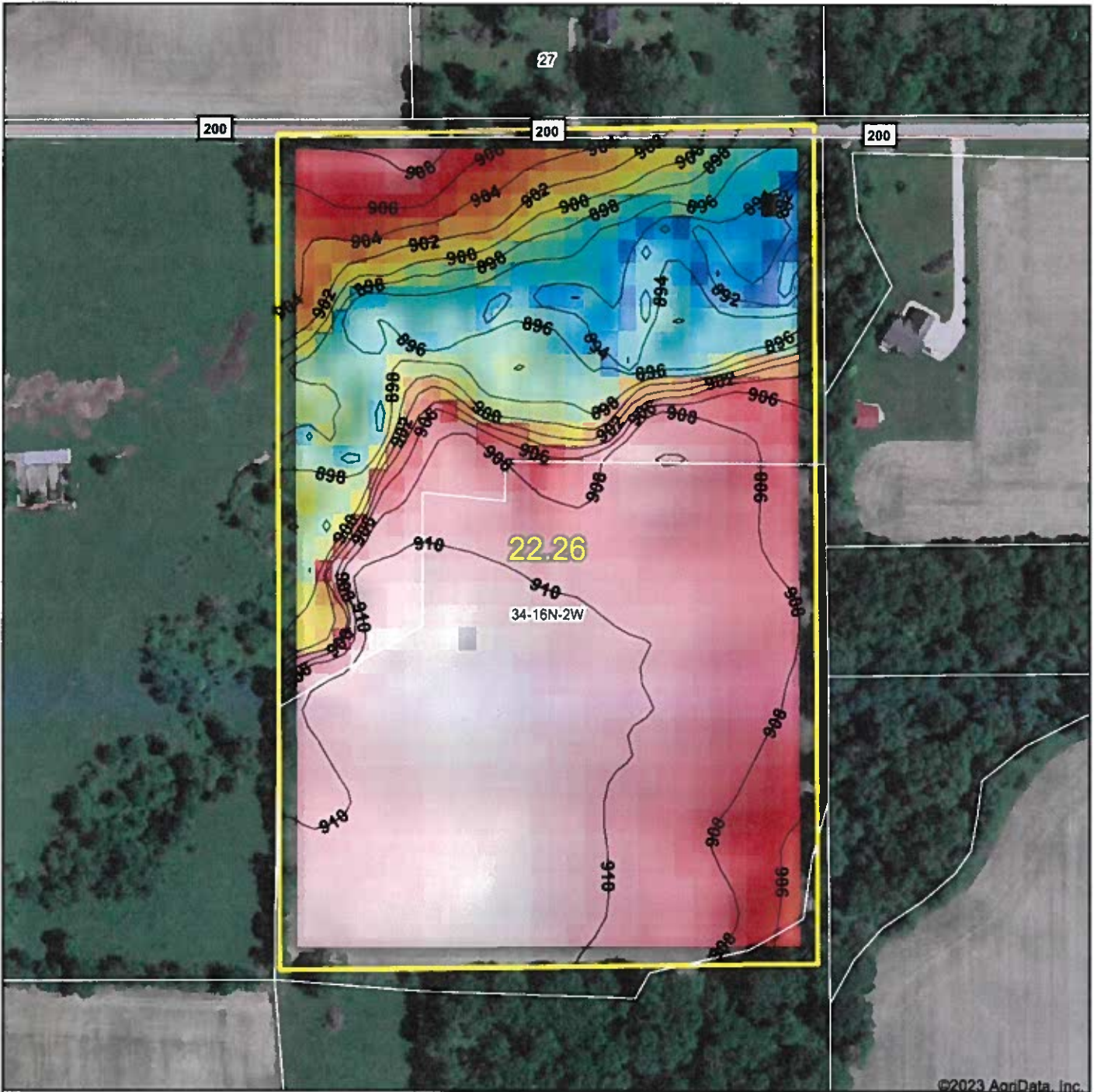
34-16N-2W
Hendricks County
Indiana

Map Center: 39° 47' 12.24, -86° 37' 51.12

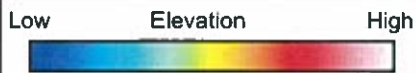


Field borders provided by Farm Service Agency as of 5/21/2008.

Topography Hillshade



©2023 AgriData, Inc.



Source: USGS 10 meter dem
 Interval(ft): 2
 Min: 887.9
 Max: 912.0
 Range: 24.1
 Average: 905.3
 Standard Deviation: 6.2 ft



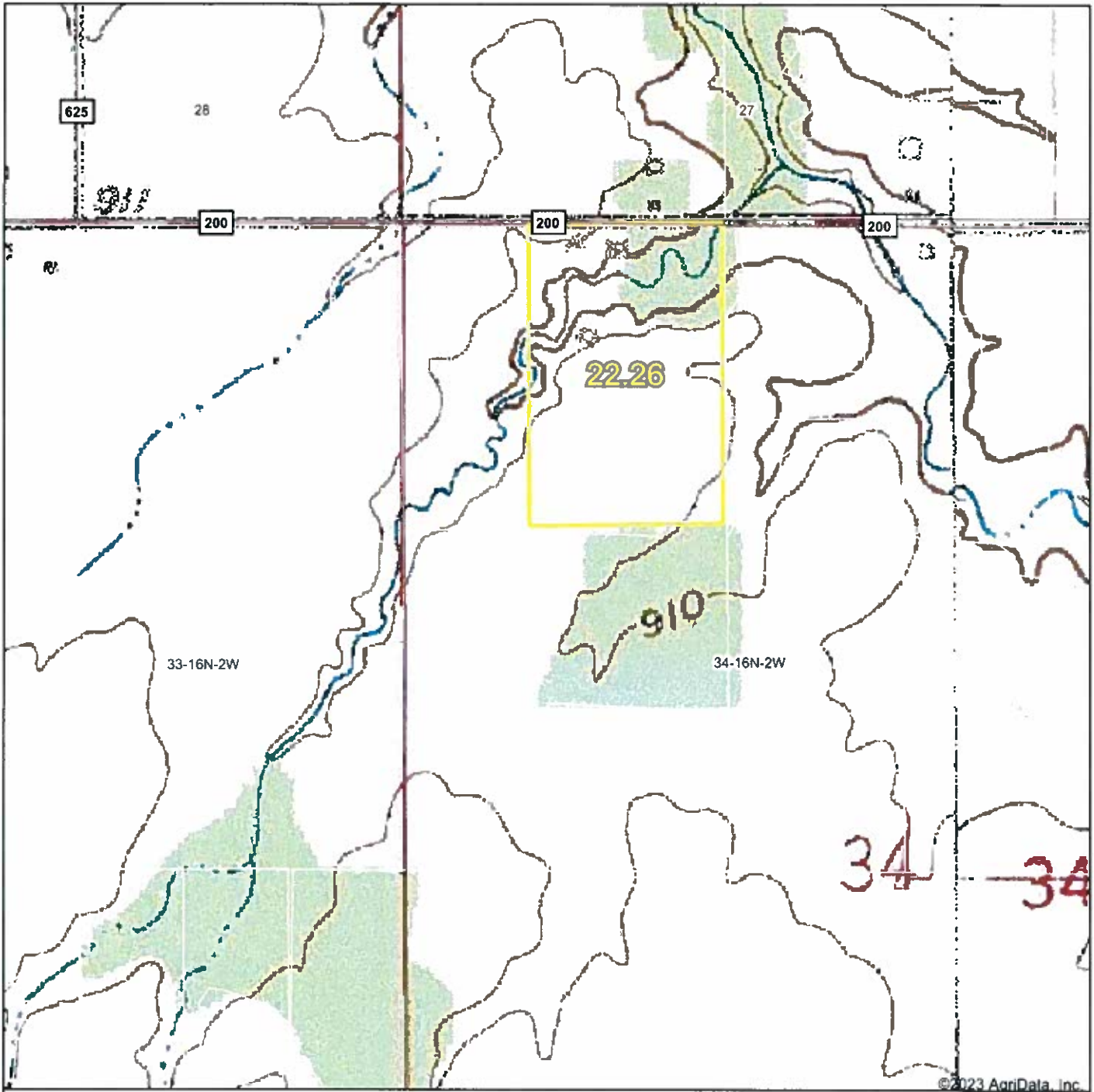
34-16N-2W
Hendricks County
Indiana

map center: 39° 47' 12.24, -86° 37' 51.12



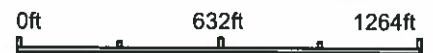
© AgriData, Inc. 2023 www.AgriDataInc.com
 Field borders provided by Farm Service Agency as of 5/21/2008.

Topography Map



©2023 AgriData, Inc.

map center: 39° 47' 12.24, -86° 37' 51.12

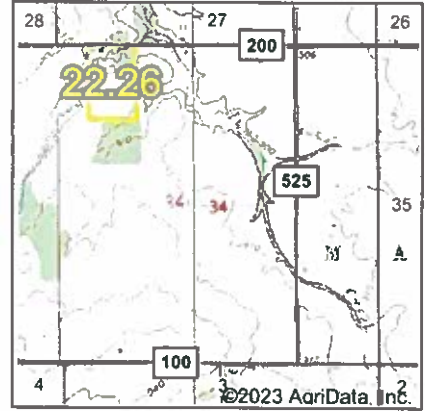


34-16N-2W
Hendricks County
Indiana



Field borders provided by Farm Service Agency as of 5/21/2008.

Wetlands Map



State: **Indiana**
 Location: **34-16N-2W**
 County: **Hendricks**
 Township: **Marion**
 Date: **5/5/2023**

Maps Provided By:

 CUSTOMIZED ONLINE MAPPING
 © AgriData, Inc. 2023 www.AgriDataInc.com

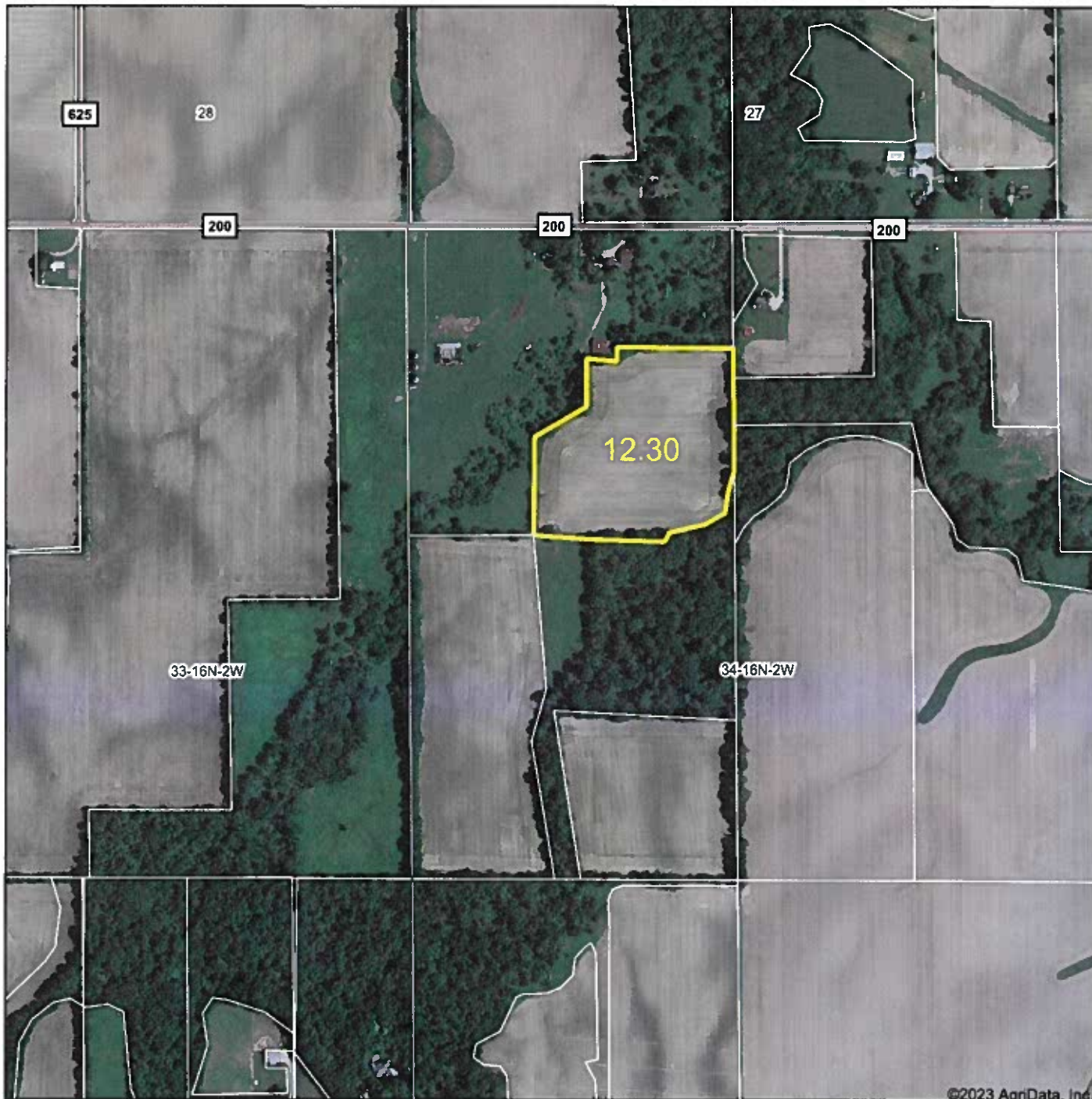


Classification Code	Type	Acres
R2UBH	Riverine	0.87
Total Acres		0.87

Data Source: National Wetlands Inventory website. U.S. DoI, Fish and Wildlife Service, Washington, D.C. <http://www.fws.gov/wetlands/>

Field borders provided by Farm Service Agency as of 5/21/2008.

Aerial Map



Map Center: 39° 47' 12.24, -86° 37' 51.12



34-16N-2W
Hendricks County
Indiana

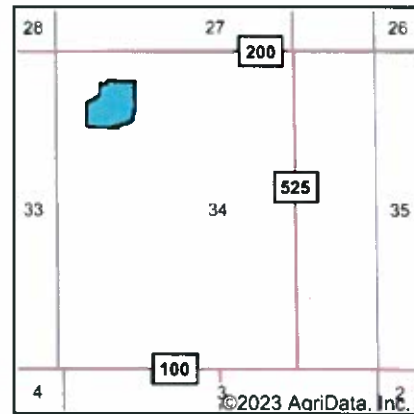
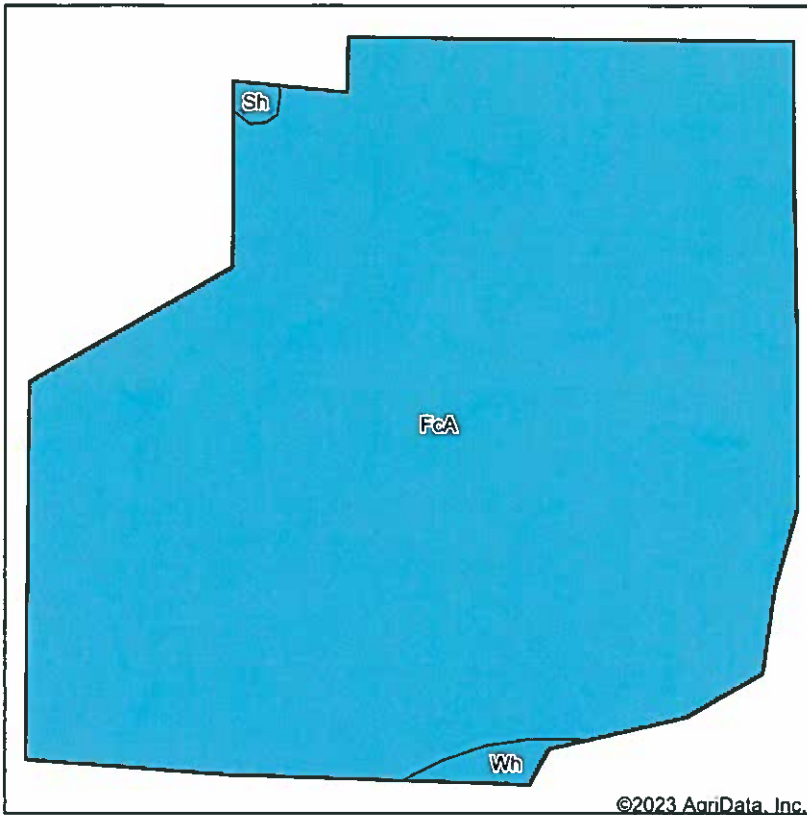


Maps Provided By:

 CUSTOMIZED ONLINE MAPPING
 © AgriData, Inc. 2023 www.AgrDataInc.com

Field borders provided by Farm Service Agency as of 5/21/2008.

Soils Map



State: **Indiana**
 County: **Hendricks**
 Location: **34-16N-2W**
 Township: **Marion**
 Acres: **12.3**
 Date: **5/5/2023**



Soils data provided by USDA and NRCS.

Area Symbol: IN063, Soil Area Version: 26										
Code	Soil Description	Acres	Percent of field	Non-Irr Class Legend	Non-Irr Class *c	Corn Bu	Grass legume hay Tons	Pasture AUM	Soybeans Bu	Winter wheat Bu
FcA	Fincastle silt loam, Tipton Till Plain, 0 to 2 percent slopes	12.19	99.1%		llw	168	5	11	62	65
Wh	Whitaker silt loam, 0 to 2 percent slopes	0.11	0.9%		llw	155	5	10	51	70
Weighted Average					2.00	167.9	5	11	61.9	65

*c: Using Capabilities Class Dominant Condition Aggregation Method

Soils data provided by USDA and NRCS.