

LAWSON & CO  
PO BOX 327  
DANVILLE, IN 46122



**PUBLIC AUCTION**  
**George “Jeff” Fisk**  
**Western Tack**  
**Lawson Auction Gallery**  
**1280 East Main Street**  
**Danville, Indiana**  
**SATURDAY – JANUARY 27<sup>TH</sup>**  
**10AM E.D.T.**  
**PREVIEW AVAILABLE FRIDAY JANUARY 26<sup>TH</sup>**  
**FROM 4:30 – 7:00 PM AT LAWSON & CO GALLERY**



**1993 CADILLAC CONVERTIBLE**  
**2016 HARLEY DAVIDSON MOTORCYCLE**  
**2016 KAWASAKI MULE 610 4X4 – TSC 8’ SINGLE AXLE TRAILER**  
**RIDING MOWER - LASTEC ZTR LAWN MOWER**  
**DONE RIGHT LEAF/LAWN VACUUM - IH B 414 UTILITY TRACTOR**  
**To sell at approx. 12:00 Noon**



**SADDLES – BRIDLES – BITS – STIRRUPS – WESTERN TACK**  
**To sell at approx. 11:00 AM**



**CHAPS – HATS – BOOTS – WESTERN CLOTHES – WINTER GEAR**  
**KING RANCH COLLECTIBLES – WESTERN/NCHA PRINTS**  
**WESTERN MEMORBILLIA/COLLECTIBLES**  
**STAIN GLASS WINDOW – FURNITURE**  
**COKE MACHINE – COLLECTIBLES**  
**CATTLE PANELS – WOVEN WIRE HORSE FENCE - TOOLS**



**Owners:** Several consignors to include:  
Sue Fisk; Richard Armstrong; Phil Rehl

**Auctioneers Note:** Time of sale beginning promptly at 10:00 a.m. Saddles to sell at approx. 11:00 a.m. Automobile, motorcycle and mowers to sell at approx. 12:00(noon). Multiple auction rings will be going throughout the day, bring a friend so you do not miss a bargain. 10% Buyer’s Premium.



**LAWSON & CO.**  
**Auctioneers and Real Estate Professionals**  
**Jack Lawson   Brandon K. Lawson**  
AU01000629   AU19300138  
**JR Webb II** - AU11100005  
www.lawsonandco.com  
1280 East Main Street • Danville, Indiana 46122  
(317) 745-6404 \* FAX (317) 745-7810  
**Terms of Sale/ Cash, Approved Check or Visa/ Master Card**





**1993 CADILLAC CONVERTIBLE - 2016 HARLEY DAVIDSON MOTORCYCLE**  
**2016 KAWASAKI MULE 610 4X4 – TSC 8’ SINGLE AXLE TRAILER – LASTEC ZTR LAWN MOWER – DR LEAF/LAWN**  
**VACUUM - IH B 414 UTILITY TRACTOR - RIDING MOWER**

**To sell at approx. 12:00 Noon**

1993 Cadillac Allante PININFARINA(Italian car design) Convertible, 32V Northstar, auto transmission, power steering-breaks-windows-locks-seats, leather seats, loaded, white w/ black top, 145,600 miles, (owner: Jeff Fisk Estate); 2016 Harley Davidson FLD -switchback Motorcycle, train cam 103 engine, 6 speed, gear box, smooth shifting, cruise control, windshield, saddle bags, leg guards, Vivid Black in color, ONLY 138.6 MILES, (owner: Richard Armstrong); 2016 Kawasaki Mule 610 4x4, w/ manual dump bed, windshield, winch and snow blade, 89 hours (owner: Phil Rehl); TSC single axle 8ft long trailer w/ drop gate; Lastec 28hp 60” cut ZTR lawn mower w/ dual fuel tanks, new tires, 1380 hours; Done Right Professional Power Leaf and Lawn vacuum, 223 (14)engine, w/ electric start; International Harvester B414 Utility tractor w/ 3pt; 6ft 3pt rotary mower, 6ft 3pt grader blade, 3pt boom; Lazer Z Ex Mark zero turn mower w/ 2hp engine (high hrs); Huskee GT 20hp/50 “Hydro” automatic riding mower



**SADDLES – BRIDLES – BITS – STIRRUPS – WESTERN TACK - To sell at approx. 11:00 AM**

Coates 17” 1993 Trophy/saddle w/ full basket weave, rough out flat bottom seat and fenders, breast collar, leather horn, wood stirrups, LIKE NEW; Jeff Smith 18” cowboy collection flat bottom, smooth seat, leather horn, diamond tooling, square skirt, rawhide 0x bow stirrups (stamped 3 times), LIKE NEW; Price McLaughlin Saginaw, Texas 16” 1976 Trophy saddle, desert rose tooling, rawhide horn, 3” wood bell stirrups, Silver Wraps Candle; Cowboy Tack 17” flat bottom rough out seat and fenders, full basket weave tooling, breast collar, Oxbow leather stirrups, LIKE NEW; Belly Cook 17” flat bottom rough out seat and fenders, oak acorn tooling, 4” braided horn, 2 ½” leather wrap stirrups; Dakota #325, 15” barrel saddle w/ rough out seat, rawhide horn, basket weave, breast collar, full rigging; Two Hershberger (Rockville IN) 14” flat bottom youth or ladies saddle w/ breast collar, full rigging; Several new and used headstalls to include: rawhide, leather, nylon, rope halters; 5/8” HD reins; stirrups to include: cowboy rawhide, oxbow rawhide, tapaderos; bits to include: 1978 D Crews; bridle, leads, teins, tie downs; headstall w/ barrel bit, loop reins, tie down; used blankets pads, winter blankets, hoods & coolers; grooming gear

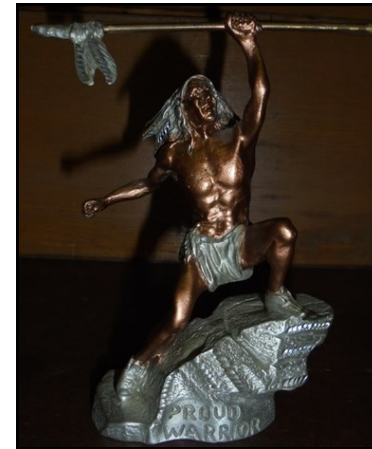


**CHAPS – HATS – BOOTS – WESTERN CLOTHES – WINTER GEAR**

Several felt and straw western hats size 7 – 7 1/8 – 7 ¼ ; several new and used men’s and ladies western boots: (19 used pairs and 4 new pair - men’s) size 10-10 ½ ; (3 pair of ladies) size 5-8, some exotic leather; large lot of new and used men’s XL western and winter clothes, coats, vests to include: Levi jackets, vest, leather, down, Carharts, Wrangler jeans (34x36); western shirts (16 ½ x 35); Chaps to include: men’s Batwings by Cody Custom Saddling; Chinks by M.S. Leathers Maker; 2 pairs of old Batwings (wall hangers)

**KING RANCH COLLECTIBLES – WESTERN/NCHA PRINTS**  
**WESTERN MEMORBILLIA/COLLECTIBLES**

2 branding irons; Texas Ranger spurs; cast iron boot scrapers to include: a scraper with brush and boot holders w/ horse design; 44” tall concrete yard jockey w/ lantern; King Ranch & Little Peppy 3 vol book set w/ book display; Fredrick Remington 14” tall “Mountain Man”, restrike; Hartselle Springs Ranch in Colorado limited edition prints by Lee Cable w/ Buffalo theme; Mohamad Alee books & pictures; Heritage Pewter Whisky decanter set; Jack Daniels poker chips and cards; framed etching by Anna Foots numbered prints to include: 1972 “Good Judgment” ridden by Pat Patterson 147/1000 WWCH; 1973 “Sugar Vaquero” Ridden by Bobby Sikes 147/1000 WCCH; 1974 & 1976 “Mr. San Peppy” ridden by Buster Welch 147/1000 WCCH; 1975 “Peppy’s Desire” ridden by Carol and Matlock Rose 147/1000 WCCH; 1977 “Peponita” ridden by Matlock Rose 147/1000 WCCH; 1978 “Doc’s Playmate” 147/1000 WCCH; “Nashua”, “Swaps” and “Man O War” thoroughbred pictures by Allen F. Jr.; “Jesse James” cutting pictures by Jack White (print); several Repo cast iron banks; toy cap gun and holster; King Ranch work coat (NIB); Brass collectibles; iron horsehead hitch post; limited edition of “Legends” statues to include: “End of the Trail” by James Earl Fraser; Master works fine Pewter Indian statues to include: 1950 Kiowa Dancer, Proud Warrior by Peter C. Seddon, Indian Painting Hide 989/2500



**STAIN GLASS WINDOW**  
**FURNITURE – COKE MACHINE**  
**COLLECTIBLES**

Coke Machine by Cavalier Corp, Chattanooga TN, Serial # 194718, 42” wide by 33” tall by 30” deep, coil and compressor in place(believe not to work), ice tray, front good w/ no tray, above average paint and label, on rollers; cast iron yard furniture; white toughed fainting sofa, Stain glass windows to include: 34” x 34” framed, 21” x 58” framed; 1930’s open base wardrobe; (4) spindle back plank bottom dining chairs; spindle back rocker; American Drew sofa table; Kessler cane back office chair; wash stand w/ towel bar; 4 sets of golf clubs w/ bag and accessories; egg basket; cheese box; advertising signs to include: Marlboro; antique pull down ceiling light w/ globe; Ox yoke; 3 leg milk stool; 1950’s metal lawn rocking chair; Oshkosh steamer trunk of Wisconsin, Sold by Bankhardt’s Luggage shop of Cincinnati OH; PR 7” Ford hub caps; NYCS 6” tall RR water can w/ bail (no lid); Seth Thomas mantel clock; interior and exterior lights



**CATTLE PANELS – WOVEN WIRE HORSE FENCE**  
**TOOLS**

12ft cattle panels (various conditions); 4ft - 8ft – 10ft – 14 ft pipe gates; over 500ft of 52” tall woven wire horse fence (used); bull clamps; several water/feed buckets; Homelite XL 12 Chainsaw; Poulan 2000 chainsaw; Ridgid 8gal 3.25hp/8gal ShopVac; several barn hand tools; wheel barrow; log chains

